

MIPI Plus Demo_MIPI_Plus

UFS EMMC

模式: 测试座 速率: AUTO 断开连接 华为麒麟芯片

芯片信息 安卓信息

品牌: SKhynix 型号: HN8T15B2GKX016
 UFS版本: 3.10 固件版本: A043
 容量: 238.37GB 日期: 12/2020
 Boot: Boot A REF_CLK: 19.2MHz;
 配置锁: Locked RPMB: 57491
 写保护: 是 UFS健康值: 90%

分区表:

Partition	Lun Only	Image file	Address	Length	Size
hoden_secure	click to ...	0X000180000	0X000088000	8.5MB	
hoden	click to ...	0X000A00000	0X000050000	5MB	
certification	click to ...	0X000F00000	0X000A00000	1MB	
semaif	click to ...	0X001700000	0X000A00000	1MB	
secure_storage	click to ...	0X001700000	0X000200000	32MB	
hodenmvn_factory	click to ...	0X001900000	0X000100000	16MB	
hodenmvn_backup	click to ...	0X001A00000	0X000100000	16MB	
hodenmvn_img	click to ...	0X001B00000	0X000200000	48MB	
hisee_encos	click to ...	0X001E00000	0X000040000	4MB	
veritykey	click to ...	0X001E00000	0X000010000	1MB	
ddr_para	click to ...	0X001E00000	0X000040000	4MB	
looppower_para	click to ...	0X001E00000	0X000040000	4MB	
hott_tp_para	click to ...	0X001E00000	0X000010000	1MB	
reserved2	click to ...	0X001E00000	0X000150000	21MB	
hw_splsh2	click to ...	0X001F00000	0X000500000	80MB	
bootfail_info	click to ...	0X001F00000	0X000200000	2MB	
hisee	click to ...	0X001F00000	0X000200000	2MB	
dfx	click to ...	0X001F00000	0X000100000	16MB	
irecord	click to ...	0X001F00000	0X000100000	16MB	
metadata	click to ...	0X001F00000	0X000100000	16MB	
fw_ufsdv	click to ...	0X001F00000	0X000040000	4MB	
toc	click to ...	0X001E00000	0X000010000	1MB	
h12	click to ...	0X001E00000	0X000040000	4MB	
fw_lm3	click to ...	0X001F00000	0X000010000	1MB	
hpu	click to ...	0X001F00000	0X000050000	8MB	
hiep3	click to ...	0X001F00000	0X000020000	2MB	
hvp	click to ...	0X001F00000	0X000050000	8MB	
hisp	click to ...	0X001F00000	0X000050000	8MB	
hisee_img	click to ...	0X001F00000	0X000040000	4MB	
hisee	click to ...	0X001F00000	0X000040000	4MB	
hisee_fw	click to ...	0X001F00000	0X000040000	4MB	
hisee_fw	click to ...	0X001F00000	0X000040000	4MB	
vector	click to ...	0X001F00000	0X000040000	4MB	
hisp_boot	click to ...	0X001F00000	0X000020000	2MB	
hisp_firmware	click to ...	0X001F00000	0X000080000	14MB	
fw_hifi	click to ...	0X001F00000	0X0000C0000	12MB	
teos	click to ...	0X0023A0000	0X000080000	8MB	
sensorhub	click to ...	0X002420000	0X000100000	16MB	
fw_dtb	click to ...	0X002520000	0X000080000	8MB	
hbo	click to ...	0X002520000	0X000080000	8MB	
htrufirmware	click to ...	0X002680000	0X000020000	2MB	
hoden_fw	click to ...	0X0026A0000	0X000080000	134MB	
hoden_patch_hw	click to ...	0X002F00000	0X000040000	4MB	
hoden_diver	click to ...	0X002F00000	0X000140000	12MB	
hodenmvn_update	click to ...	0X003080000	0X000100000	16MB	
hodenmvn_curt	click to ...	0X003180000	0X000100000	16MB	
recovery_vbeta	click to ...	0X003280000	0X000020000	2MB	
recovery_vbeta	click to ...	0X0032A0000	0X000020000	2MB	

oeminfo是与运行商OTA升级面容等参数
分区编辑器不能完全写入

基带参数一机一个参数
不可替换

数据恢复1667-53330

安全数据 清除 读取 写入

MIPI Plus Demo_MIPI_Plus

UFS EMMC

模式: 测试座 速率: AUTO 断开连接 华为荣耀高通

芯片信息 安卓信息

品牌: TOSHIBA 型号: THGJFCT0448A1LB
 UFS版本: 3.00 固件版本: 0100
 容量: 119.2GB 日期: 10/2019
 Boot: Boot A REF_CLK: 38.4MHz
 配置锁: Not Locked RPMB: 0
 写保护: 否 UFS健康值: 90%

分区表:

Partition	Lun Only	Image file	Address	Length	Size
LUN 0	click to ...	0X000000000	0X100000000	64GB	
PrimaryGPI_0	click to ...	0X000000000	0X000000000	24KB	
zsd	click to ...	0X000000000	0X000002000	8KB	
perarit	click to ...	0X000000000	0X000400000	64MB	
hisee	click to ...	0X000400000	0X000020000	2MB	
hoytore	click to ...	0X000400000	0X000010000	1MB	
hisp	click to ...	0X000428000	0X000010000	1MB	
hisee	click to ...	0X000438000	0X000050000	5MB	
hisp_info	click to ...	0X000488000	0X000010000	1MB	
reserved1	click to ...	0X000F00000	0X000028000	6.4MB	
semaif	click to ...	0X000F00000	0X000060000	60KB	
bootfail_info	click to ...	0X000E00000	0X000090000	8MB	
irecord	click to ...	0X000C00000	0X000400000	64MB	
hisp	click to ...	0X001000000	0X000680000	104MB	
metadata	click to ...	0X001680000	0X000400000	64MB	
hiseeimg	click to ...	0X001A00000	0X000090000	12MB	
reserved1	click to ...	0X002280000	0X000180000	24MB	
eng_system_a	click to ...	0X002400000	0X000180000	24MB	
eng_vendor_a	click to ...	0X002580000	0X0000C0000	12MB	
vbmeta_system_a	click to ...	0X002640000	0X000010000	1MB	
vbmeta_vendor_a	click to ...	0X002650000	0X000010000	1MB	
vbmeta_odm_a	click to ...	0X002660000	0X000010000	1MB	
vbmeta_cust_a	click to ...	0X002670000	0X000010000	1MB	
vbmeta_product_h_a	click to ...	0X002680000	0X000010000	1MB	
vbmeta_pres_a	click to ...	0X002690000	0X000010000	1MB	
vbmeta_presv_a	click to ...	0X0026A0000	0X000010000	1MB	
vbmeta_system_ext_a	click to ...	0X0026B0000	0X000010000	1MB	
vbmeta_system_a	click to ...	0X0026C0000	0X000010000	1MB	
vbmeta_preload_a	click to ...	0X0026D0000	0X000010000	1MB	
vbmeta_vendor_dilka_a	click to ...	0X0026E0000	0X000010000	1MB	
vbmeta_product_a	click to ...	0X0026F0000	0X000010000	1MB	
vbmeta_system_dilka_a	click to ...	0X002700000	0X000010000	1MB	
huksta_a	click to ...	0X002710000	0X000010000	1MB	
hisee_agent_a	click to ...	0X002720000	0X000010000	1MB	
hisp_patch_a	click to ...	0X002730000	0X000010000	1MB	
fw_ufsdv_a	click to ...	0X002780000	0X000080000	8MB	
hisp_patch_a	click to ...	0X002900000	0X000080000	128MB	
vbmeta_a	click to ...	0X003100000	0X000100000	16MB	
reserved2_a	click to ...	0X003200000	0X000140000	20MB	
eng_system_b	click to ...	0X0033A0000	0X000180000	24MB	
eng_vendor_b	click to ...	0X0034C0000	0X0000C0000	12MB	
vbmeta_system_b	click to ...	0X003580000	0X000010000	1MB	
vbmeta_vendor_b	click to ...	0X003590000	0X000010000	1MB	
vbmeta_odm_b	click to ...	0X0035A0000	0X000010000	1MB	
vbmeta_cust_b	click to ...	0X0035B0000	0X000010000	1MB	
vbmeta_product_h_b	click to ...	0X0035C0000	0X000010000	1MB	
vbmeta_pres_b	click to ...	0X0035D0000	0X000010000	1MB	

指纹传感器参数OTA
升级型号与运营商
电池

数据恢复1667-53330

安全数据 清除 读取 写入

模式: 测试座 速率: AUTO 断开连接

BUF: 4B VCC: 2.85

用户区 工厂包 服务 华为荣耀

Partition	Lun Only	Image File	Address	Length	Size
All	<input checked="" type="checkbox"/>	click to ...			
LUN 0	<input type="checkbox"/>	click to ...	0X0000000000	0X0100000000	4GB
LUN 1 Boot A	<input checked="" type="checkbox"/>	click to ...	0X0001400000	0X0001400000	20MB
LUN 2 Boot B	<input type="checkbox"/>	click to ...	0X0001400000	0X0001400000	20MB
LUN 3	<input type="checkbox"/>	click to ...	0X0000000000	0X0000000000	8MB
LUN 4	<input checked="" type="checkbox"/>	click to ...	0X0008100000	0X0008100000	2.05GB
LUN 5	<input type="checkbox"/>	click to ...	0X0000000000	0X0000000000	94MB

基带参数

安全数据 读写校验

清除 读取 写入

芯片信息 安卓信息

品牌: TOSHIBA 型号: THJFCT0T448A1LB
 UFS版本: 3.0 固件版本: 0100
 容量: 119.2GB 日期: 10/2019
 Boot: Boot A REF_CLK: 38.4MHz
 配置锁: Not Locked RFBM: 0
 写保护: 否 UFS健康值: 90K

Gear: HS_G2B Buff: 0x4B
 VCC: 2.88 VCCQ: 1.92 VCCQ: 1.32
 -----info-----
 产品名称: THJFCT0T448A1LB
 SerialNumber: 60CA6835VM
 OEMID :
 ProductRevision : 0100
 SpecVersion : 3.00
 ManufacturerName : TOSHIBA
 ManufactureDate : 10/2019
 PermanentlyDisableUpdate : 0
 BootLunEn : 1
 ConfigDescrLock : 0

RFBM Counter : Authentication Key not yet programmed
 TotalRawDeviceCapacity : 122056MB

LUN 0 : 64GB
 LUN 1 : Boot A : 20MB
 LUN 2 : Boot B : 20MB
 LUN 3 : 8MB
 LUN 4 : 2.05GB
 LUN 5 : 94MB

Device Life Time EstA : 0% - 10% device life time used
 Device Life Time EstB : 0% - 10% device life time used

0.0%
0.0%

SH数据恢复1067153330

#MIP1 Plus Demo_MIP1_Plus

UFS EMMC

模式: 测试座 速率: AUTO 断开连接

BUF: 4B VCC: 2.85

用户区 工厂包 服务

Boot设置: Boot LUN A 读取 写入

REF_CLK设置: 19.2MHz 读取 写入

启动分区选择

时钟选择

芯片信息 安卓信息

品牌: SAMSUNG 型号: KLUDG4LHD8-B2D1
 UFS版本: 3.10 固件版本: 1302
 容量: 119.2GB 日期: 10/2020
 Boot: Boot A REF_CLK: 19.2MHz
 配置锁: Not Locked RFBM: 50215
 写保护: 否 UFS健康值: 70K

写入Lun4_38_ufisecapp... 完成
 写入Lun4_38_ufisecappbak... 完成
 写入Lun4_39_ufisecappbak... 完成
 写入Lun4_40_abl... 完成
 写入Lun4_41_ablbak... 完成
 写入Lun4_42_tz... 完成
 写入Lun4_44_sprwm... 完成
 写入Lun4_45_hyp... 完成
 写入Lun4_48_dtbo... 完成
 写入Lun4_49_logo... 完成
 写入Lun4_50_dsp... 完成
 写入Lun4_51... 完成
 写入Lun4_52_boot... 完成
 写入Lun4_53_boot... 完成
 写入Lun4_54_img... 完成
 写入Lun4_55_img... 完成
 写入Lun4_59_imagefbak... 完成
 写入Lun4_61_BackupGPT... 完成
 写入Lun5_01_PrimaryGPT... 完成
 写入Lun5_13_BackupGPT... 完成
 写入Lun5_13_BackupGPT... 完成

SH数据恢复1067153330

MIPI Plus Demo_MIPI_Plus

UFS EMMC

模式 测试座 速率 AUTO

BUF: 4B VCC: 2.85

断开连接

芯片信息 安卓信息

品牌: SAMSUNG 型号: KM8F9001JM-B813

UFS版本: 2.20 固件版本: 0700

容量: 238.37GB 日期: 06/2022

Boot: Boot A

配置锁: Not Locked

写保护: 否

时钟MTK一般都是26M

3330

BOOT-A启动

LUN0 BOOTA

SH数据恢复1667153330

LUN1 BOOTB

3330

MTK的LUN0 系统参数 用户数据 基带参数 DDR参数

GPT,定义以下每个分区的大小以及地址
比如说128的库userdata大概就是110多个G

256就是240多个G

UFS厂商不一样内存大小不一样
GPT定义不同, GPT不对开机进屏重

SH数据恢复 667153330

本地账户锁存储, 指南针传感器, 指纹安全参数

安全数据 读写校验

删除 读取 写入

MIPI Plus Demo_MIPI_Plus

UFS EMMC

模式 测试座 速率 AUTO

BUF: 4B VCC: 2.85

断开连接

芯片信息 安卓信息

品牌: SAMSUNG 型号: KM8F9001JM-B813

UFS版本: 2.20 固件版本: 0700

容量: 238.37GB 日期: 06/2022

Boot: Boot A

配置锁: Not Locked

写保护: 否

Gear: HS_G2B Buff: 0X4B

VCC: 2.88 VCCQ2: 1.86 VCCQ: 1.34

产品名称: KM8F9001JM-B813

SerialNumber: 66b9b840451f

OEMID: SAMSUNG_OEM_ID

ProductRevision: 0700

SpecVersion: 2.20

ManufacturerName: SAMSUNG

ManufacturerDate: 06/2022

PermanentWPE: 0

PermanentlyDisableFWUpdate: 0

BootLunEn: 1

ConfigDescrLock: 0

RPMB Counter: 3807

TotalRawDeviceCapacity: 24408MB

LUN 0: Boot A 4MB

LUN 1: Boot B 4MB

LUN 2: 238.34GB

Pre End of Life: Normal

Device Life Time EstA: 0% - 10% device life time used

Device Life Time EstB: 0% - 10% device life time used

备份GPT, MTK需要写, 不写更新系统会
变砖

小米MTK机器写全资库救砖需要
写这个分区

3330

3330

禁复制

SH数据恢复1667153330

安全数据 读写校验

删除 读取 写入

MIPI Plus Demo_MIPI_Plus

UFS EMMC

模式: 测试座 速率: AUTO

BUF: 4E VCC: 2.85

连接

芯片信息 安卓信息

品牌: SAMSUNG 型号: KM8F9001JM-B813

UFS版本: 2.20 固件版本: 0700

容量: 238.37GB 日期: 06/2022

Boot: Boot A REF_CLK: 26MHz

配置锁: No Locked RPMB: 3807

写保护: 否 UFS健康值: 90%

Gear: HS_0CB Buf: 0x4B

VCC: 2.85 VCC2: 1.86 VCCQ: 1.34

产品名称: KM8F9001JM-B813

SerialNumber: 66b9b840451f

OEMID: SAMSUNG_OEM_ID

ProductRevision: 0700

SpecVersion: 2.20

ManufacturerName: SAMSUNG

ManufactureDate: 06/2022

PermanentWPEn: 0

PermanentlyDisableFWUpdate: 0

BootLunEn: 1

ConfigDescrLock: 0

RPMB Counter: 3807

TotalRawDeviceCapacity: 240688MB

LUN 0: Boot A 4MB

LUN 1: Boot B 4MB

LUN 2: 238.34GB

Pre End of Life: Normal

Device Life Time EstA: 0% - 10% device life time used

Device Life Time EstB: 0% - 10% device life time used

Partition Lun Only Image file Address Length Size

All

LUN 0 Boot A click to ... 0X0000000000 0X0000400000 4MB

LUN 1 Boot B click to ... 0X0000000000 0X0000400000 4MB

LUN 2 click to ... 0X0000000000 0X3B96000000 238.34GB

PrimaryGPT_2 click to ... 0X0000000000 0X0000000000 32KB

misc click to ... 0X0000000000 0X0000000000 512KB

countrycode click to ... 0X0000200000 0X0000200000 2MB

para click to ... 0X0000280000 0X0000000000 512KB

expdb click to ... 0X0000300000 0X0002800000 40MB

frp click to ... 0X0002000000 0X0000100000 1MB

nvfwfg click to ... 0X0002C00000 0X0002200000 32MB

nvdata click to ... 0X0004C00000 0X0004000000 64MB

ffu click to ... 0X0008C00000 0X0008000000 8MB

gsort click to ... 0X0009400000 0X0001000000 16MB

cust click to ... 0X000A400000 0X0008000000 2GB

rescue click to ... 0X000A400000 0X0008000000 128MB

vbnmeta_a click to ... 0X00092C0000 0X0000800000 8MB

vbnmeta_system_a click to ... 0X0009340000 0X0000800000 8MB

vbnmeta_vendor_a click to ... 0X00093C0000 0X0000800000 8MB

vbnmeta_system_b click to ... 0X0009400000 0X0000800000 8MB

vbnmeta_vendor_b click to ... 0X0009400000 0X0000800000 8MB

meta_data click to ... 0X0009400000 0X0002400000 2MB

persist click to ... 0X0009400000 0X0003F00000 51.97MB

protect1 click to ... 0X000A800000 0X0000800000 8MB

protect2 click to ... 0X0009B00000 0X0000800000 8MB

seccfg click to ... 0X0009B00000 0X0000800000 8MB

otp click to ... 0X0009C00000 0X0003000000 48MB

admling_a click to ... 0X0009F00000 0X000C800000 200MB

spmfw_a click to ... 0X000AB00000 0X0000100000 1MB

plimg_a click to ... 0X000AB00000 0X0000100000 1MB

dpa_a click to ... 0X000AB00000 0X0000400000 4MB

安全数据 擦除 读取 写入

MIPI_Plus SN:A00492 beat 1.08 Speed:45 MB/S

MIPI Plus Demo_MIPI_Plus

UFS EMMC

模式: 测试座 速率: AUTO

BUF: 4E VCC: 2.85

断开连接

芯片信息 安卓信息

品牌: SAMSUNG 型号: KL1DG4URDB-B2D1

UFS版本: 3.10 固件版本: 1302

容量: 119.2GB 日期: 10/2020

Boot: Boot A REF_CLK: 19.2MHz

配置锁: Not Locked RPMB: 50215

写保护: 否 UFS健康值: 70%

Gear: HS_0CB Buf: 0x0B

VCC: 2.85 VCC2: 1.86 VCCQ: 1.28

产品名称: KL1DG4URDB-B2D1

SerialNumber: 4a905029a1f

OEMID: SAMSUNG_OEM_ID

ProductRevision: 1302

SpecVersion: 3.10

ManufacturerName: SAMSUNG

ManufactureDate: 10/2020

PermanentWPEn: 0

PermanentlyDisableFWUpdate: 0

BootLunEn: 1

ConfigDescrLock: 0

RPMB Counter: 50215

TotalRawDeviceCapacity: 122056MB

LUN 0: 118.01GB

LUN 1: Boot A 16MB

LUN 2: Boot B 16MB

LUN 3: 32MB

LUN 4: 1GB

LUN 5: 64MB

Pre End of Life: Normal

Device Life Time EstA: 20% - 50% device life time used

Device Life Time EstB: 20% - 30% device life time used

Partition Lun Only Image file Address Length Size

All

LUN 0 click to ... 0X0000000000 0X0010000000 4GB

LUN 1 click to ... 0X0000000000 0X0001000000 16MB

LUN 2 click to ... 0X0000000000 0X0001000000 16MB

LUN 3 click to ... 0X0000000000 0X0002000000 32MB

LUN 4 click to ... 0X0000000000 0X0040000000 1GB

LUN 5 click to ... 0X0000000000 0X0004000000 64MB

系统分区和用户参数分区

引导分区

LUN3DDR分区 扩运行内存和写运行内存资料需要调试

谷歌-基带调试一些参数

基带加密分区 不可替代

丢失或擦除需要修复基带

高通一般是19.2

67153330

67153330

SH数据恢复1667153330

min 编辑器



MiPi Tester

主页

设置

UFS 2.X

UFS 3.X

EMMC

Grea: HS-G2A

BUF: 32MB

读取安卓信息

备份重要分区

连接芯片

MiPi Connected

SN: 1881

FW: 10303

重置半皮设备

0.0MB/S

0 %

Brand: Model:

Version: Data:

Boot: RPMB:

CLK: OTP:

Capacity: FW Version:

IC连接已断开

速度

连接

UFS2.0的选这个

EMMC

UFS3.0/4.0的选这个

USERAREA FACTORY ANDROID SERVICES

名称	文件	开始地址	长度
----	----	------	----

开始地址: 0x00000000 长度: 0x00000000

修复 GPT Backup XML 读出 擦除

Jumping OEMINFO 写入 校验

MIPi Tester

主页

设置

UFS 3.0

UFS 3.X BOOT A启动

EMMC

时钟

Grea: HS-G2A

BUF: UFS容量 32MB

读取安卓信息

备份重要分区

OTP加密

断开芯片

MIPI Connected

SN: 1881

FW: 10303

重置半皮设备

0.0MB/S

0 %

厂商

Brand: SAMSUNG Model: KLUDG4UHD8-B2D1

Version: 3.0 Data: 2019-12

Boot: Boot A RPMB: 0

CLK: 19.2MHz OTP: Locked

Capacity: 119GB FW Version: 1200

super: 0x41c00000 - 0x2b8a1000 (3.42GB)

version: 0x226ae0000 - 0x28edf000 (576.00MB)

preload: 0x228ee0000 - 0x2ef5ff000 (1.37GB)

userdata: 0x228600000 - 0x172a7ff000 (465.06GB)

BackupGPT3: 0x1dc97fb00 - 0xc97ff000 (20.00KB)

OEMINFO Partial Secure Write Protect:

Region0: start offset 0x2000000, length 0x800000(8.0MB)

Region1: start offset 0x5000000, length 0x800000(8.0MB)

OEMINFO

Cust Version1: BRA-AL00-CUST 104.0.0.115(C00)

Preload Version1: BRA-AL00-PRELOAD 104.0.0.11(C00R4)

Base Version1: BRA-LGRP1-CHN 104.0.0.116(SP8)

Country/Region:

303036303034323330316164616c6c2c636e03000292c896a671daed2

6288ba9b6e6df404de4b3926efc2cfdb3f0ac1d2514a486865f527f4f3

c299942a1f13c6460da325cad09a4e114a865d65011c38f5af6c075d71

8fce6d8de7826efb9a895cc4a1fbd9bc257735e67505cbf0356cc9d2340

6ea1da3fd95c055bdefe4be9d4244e999c32cfc64a1ee78882fae52b41

0e222c5e01bdfb5f2eadf58e1c761df0099c5f4562802a89d359b9a7289

fdac2ca66bd2f682fbc19846bfa7474067e3366887de6a902ad1e86938

08d0cfaaf147a64692c458b0cf279a7cf8e90d28d85a24bb6774b897acf

0bd56bb6bb1447fd6f1ca7e0c56feb18b3b10246d127ca65af27d365b7

471930f833c09c1a47954726865e892b4aed18ab95362010ef3e6f547f

USERAREA FACTORY ANDROID SERVICES

LUN_0(BootA) ...Click to open file

LUN_1(BootB) ...Click to open file

LUN_2(Unit2) ...Click to open file

LUN_3(Unit3) ...Click to open file Auto

名称	文件	开始地址	长度
LUN0	BootA	have no partition	
LUN1	BootB	have no partition	
LUN2	Unit2	have [3] partitions	
P0	PrimaryGPT...	点击打开文件	0x0 0x6000
P1	frp	点击打开文件	0x80000 0x8000
P2	persist	点击打开文件	0x100000 0x6000
P3	reserved1	点击打开文件	0x700000 0x1000
P4	BackupGPT_2	点击打开文件	0x7fb000 0x5000
LUN3	Unit3	have [87] partitions	
P0	PrimaryGPT...	点击打开文件	0x0 0x6000
P1	frp	点击打开文件	0x80000 0x8000
P2	vri_backup	点击打开文件	0x100000 0x8000
P3	modem_se...	点击打开文件	0x180000 0x8800
P4	nvme	点击打开文件	0xa00000 0x4000
P5	conn_calidata	点击打开文件	0xe00000 0x1000
P6	certification	点击打开文件	0xf00000 0x1000
P7	oeminfo	点击打开文件	0x1000000 0x6000
P8	secure_sta...	点击打开文件	0x7000000 0x2000
P9	modemnv...	点击打开文件	0x9000000 0x1000
P10	modemnv...	点击打开文件	0xa000000 0x1000
P11	modemnv...	点击打开文件	0xb000000 0x2e00
P12	hisee_encos	点击打开文件	0xde00000 0x4000
P13	veritykey	点击打开文件	0xe200000 0x1000
P14	ddr_para	点击打开文件	0xe300000 0x1000
P15	lowpower...	点击打开文件	0xe400000 0x1000
P16	batt_to_para	点击打开文件	0xe500000 0x1000

BootA 开始地址: 0x00000000 长度: 0x00000000

修复 GPT Backup XML 读出 擦除

Jumping OEMINFO 写入 校验

UFS 3.0

UFS 3.X BOOT A启动

EMMC

时钟

BUF: UFS容量 32MB

读取安卓信息

备份重要分区

OTP加密

断开芯片

厂商

芯片型号

写保护地址, 意思是编译器写不进去

手机型号, 版本信息



主页

设置

UFS 2.X

UFS 3.X

EMMC

Grea: HS-G2A

BUF: 32MB

- 读取安卓信息
- 备份重要分区

断开芯片



MIPI Connected

SN: 1881

FW: 10303

重置半皮设备

Brand: SAMSUNG Model: KLUDG4UHD8-B2D1

Version: 3.0 Data: 2019-12

Boot: Boot A RPMB: 0

CLK: 19.2MHz OTP: Locked

Capacity: 119GB FW Version: 1200

super: 0x41c00000 - 0x20a01000 (8.00MB)
 version: 0x226ae00000 - 0x228edff000 (576.00MB)
 preload: 0x228ee00000 - 0x22e65ff000 (1.37GB)
 userdata: 0x22e6600000 - 0x2772af0000 (465.06GB)
 BackupGPT_3: 0x14dc97fb000 - 0xc927ff000 (20.00KB)

OEMINFO Partial Secure Write Protect:
 Region0: start offset 0x2000000, length 0x800000(8.0MB)
 Region1: start offset 0x5000000, length 0x8000000(8.0MB)

OEMINFO
 Cust Version1: BRA-AL00-CUST104.0.0.11(S) (COO)
 Preload Version1: BRA-AL00-PRELOAD 104.0.0.11 (COOR4)
 Base Version1: BRA-LGRP1-CHN 104.0.0.11(S) (SP8)

Country/Region:
 303036303034323330316164616c6c2c636e03000292c89fa671daed2
 56288ba9b6e6df404de4b3926efc2cfdb3f0ac1d2514a448a865f527f4f3
 c299942a1f13c6460da325cad09a4e114a865d65011c35f5af6c075d71
 8fce6d8de7826efb9a895cc4a1fdbbc257735e67505cbf0356cc9d2340
 6ea1da3fd95c055bdefe4be9d4244e999c32cfcb64f1ee78882fae52b41
 0e222c5e01bdfb5f2eadf58e1c761df0099c5f4562802a89d359b9a7289
 fdac2ca66bd2f682fbc19846bf6a7474067e3366887de6a902ad1e86938
 08d0cfaaf147a64692c458b0cf279a7cf8e90d28d85a24bb6774b897acf
 0bd56bb6bb1447fd6f1ca7e0c56feb18b3b10246d127ca65af27d365b7
 471930f83c09c1a47954726865e892b4aed18ab95362010ef3e6f547f
 4768c3fda650f016cff8ee1330bd35615f4ef129799d6af87c3e5d459d20
 007eab22d1758176f57aee23c1204c38c3572a11b2504f360fd7cdf89fc
 90cec8260c4bed0fddb83bd0daa5b6ab3c6907ae8d17797aa8e64e712cb
 1e085dab0f5e7d0becaeaec0333e501756cf9d89b6c316f4463cfecd828
 d97d31e372612ea79e7d1e7be3f5fb3bea6b77aa024375c1d2ccb17d95
 c1f3af13c53f1592609847a7bba30571e3211d3cae97a5dccc3d541c3b8f
 d12231cb22a09c49bf13182d56b5b37c79b6e1b34fb45fb480c9fabd63a
 17470c2f6c4f27044b1f70c4b70c407f6c5b10e5e5f40a800400

ROOTAB启动引导LUN区

海思芯片LUN2谷歌锁等参数

LUN3系统参数, 用户区

USERAREA FACTORY ANDROID SERVICES

名称	文件	开始地址	长度	大小	
LUN_0(BootA)	...Click to open file				
LUN_1(BootB)	...Click to open file				
LUN_2(Unit2)	...Click to open file				
LUN_3(Unit3)	...Click to open file				
<input type="checkbox"/> 全选					
<input type="checkbox"/> LUN0	BootA	have no partition			
<input type="checkbox"/> LUN1	BootB	have no partition			
<input type="checkbox"/> LUN2	Unit2	have [3] partitions			
<input type="checkbox"/> P0	PrimaryGPT...	点击打开文件	0x0	0x6000	24.00KB
<input type="checkbox"/> P1	frp	点击打开文件	0x80000	0x80000	512.00KB
<input type="checkbox"/> P2	persist	点击打开文件	0x100000	0x600000	6.00MB
<input type="checkbox"/> P3	reserved1	点击打开文件	0x700000	0x100000	1.00MB
<input type="checkbox"/> P4	BackupGPT_2	点击打开文件	0x7fb000	0x5000	20.00KB
<input type="checkbox"/> LUN3	Unit3	have [87] partitions			
<input type="checkbox"/> P0	PrimaryGPT...	点击打开文件	0x0	0x6000	24.00KB
<input type="checkbox"/> P1	vrl	点击打开文件	0x80000	0x80000	512.00KB
<input type="checkbox"/> P2	vrl_backup	点击打开文件	0x100000	0x80000	512.00KB
<input type="checkbox"/> P3	modem_se...	点击打开文件	0x180000	0x880000	8.50MB
<input type="checkbox"/> P4	nvme	点击打开文件	0xa00000	0x400000	4.00MB
<input type="checkbox"/> P5	conn_calidata	点击打开文件	0xe00000	0x100000	1.00MB
<input type="checkbox"/> P6	certification	点击打开文件	0xf00000	0x100000	1.00MB
<input type="checkbox"/> P7	oeminfo	点击打开文件	0x1000000	0x6000000	96.00MB
<input type="checkbox"/> P8	secure_stor...	点击打开文件	0x7000000	0x2000000	32.00MB
<input type="checkbox"/> P9	modemnv...	点击打开文件	0x9000000	0x1000000	16.00MB
<input type="checkbox"/> P10	modemnv...	点击打开文件	0xa000000	0x1000000	16.00MB
<input type="checkbox"/> P11	modemnv...	点击打开文件	0xb000000	0x2e00000	46.00MB
<input type="checkbox"/> P12	hisee_encos	点击打开文件	0xde00000	0x400000	4.00MB
<input type="checkbox"/> P13	veritykey	点击打开文件	0xe200000	0x100000	1.00MB
<input type="checkbox"/> P14	ddr_para	点击打开文件	0xe300000	0x100000	1.00MB
<input type="checkbox"/> P15	lowpower...	点击打开文件	0xe400000	0x100000	1.00MB
<input type="checkbox"/> P16	batt_tp_para	点击打开文件	0xe500000	0x100000	1.00MB
<input type="checkbox"/> P17	reserved2	点击打开文件	0xe600000	0x1500000	21.00MB
<input type="checkbox"/> P18	splash2	点击打开文件	0xfb00000	0x5000000	80.00MB
<input type="checkbox"/> P19	bootfail_info	点击打开文件	0x14b00000	0x200000	2.00MB
<input type="checkbox"/> P20	misc	点击打开文件	0x14d00000	0x200000	2.00MB
<input type="checkbox"/> P21	dfx	点击打开文件	0x14f00000	0x1000000	16.00MB
<input type="checkbox"/> P22	rrecord	点击打开文件	0x15f00000	0x1000000	16.00MB
<input type="checkbox"/> P23	cache	点击打开文件	0x16f00000	0x6800000	104.00MB

BootA 开始地址: 0x00000000 长度: 0x00000000

修复 GPT Backup XML 读出 擦除

Jumping OEMINFO 写入 校验



主页

设置

UFS 2.X

UFS 3.X

EMMC

Grea: HS-G2A

BUF: 32MB

- 读取安卓信息
- 备份重要分区

断开芯片



MiPi Connected

SN: 1881

FW: 10303

重置半皮设备



Brand: SAMSUNG Model: KLUDG4UHDB-B2D1
Version: 3.0 Data: 2019-12
Boot: Boot A RPMB: 0
CLK: 19.2MHz OTP: Locked
Capacity: 119GB FW Version: 1200

super: 0x4c000000 - 0x2ba00000 (0.42GB)
version: 0x26ae00000 - 0x28adff000 (576.00MB)
preload: 0x28ee00000 - 0x2e65ff000 (1.37GB)
userdata: 0x2e6600000 - 0x772a7ff000 (465.06GB)
BackupGPT_3: 0x1dc97fb000 - 0xc97ff000 (20.00KB)

OEMINFO Partial Secure Write Protect:
Region0: start offset 0x2000000, length 0x800000(8.0MB)
Region1: start offset 0x5000000, length 0x800000(8.0MB)
OEMINFO
Cust Version1: BRA-AL00-CUST 104.0.0.115(C00)
Preload Version1: BRA-AL00-PRELOAD 104.0.0.11(C00R4)
Base Version1: BRA-LGRP1-CHN 104.0.0.116(SP8)
Country/Region:
303036303034323330316164616c6c2c636e03000292c896a671daed2
56288ba9b6e6df404de4b3926efc2cfd3f0ac1d2514a4486865f527f4f3
c299942a1f13c6460da325cad09a4e114a865d65011c38f5af6c075d71
8fce6d8de7826efb9a895cc4a1fbd9bc257735e67505cbf0356cc9d2340
6ea1da3fd95c055bdefe4be9d4244e999c32cfcb64a1ee78882fae52b41
0e222c5e01bdfb5f2eadf58e1c761df0099c5f4562802a89d359b9a7289
fdac2ca66bd2f682fbc19846bf6a7474067e3366887de6a902ad1e86938
08d0cfaaf147a64692c458b0cf279a7cf8e90d28d85a24bb6774b897acf
0bd56bb6bb1447fd6f1ca7e0c56feb18b3b10246d127ca65af27d365b7
471930f833c09c1a47954726865e892b4aed18ab95362010ef3e6f547f
4768c3fda650f016cff8ee1330bd35615f4ef129799d6af87c3e5d459d20
007eab22d1758176f57aee23c1204c38c3572a11b2504f360fd7cdf89fc
90cec8260c4bed0fdbbb83b0daa5b6ab3c6907ae8d17797aa8e64e712cb
1e085dab0f5e7d0becaaec033e501756cf9d89b6c316f4463cfecd828
d97d31e372612ea79e7d1e7be3f5bf3bea6b77aa024375c1d2ccb17d95
c1f3af13c53f1592609847a7bba30571e3211d3cae97a5dcc3d541c3b8f
d12231cb22a09c49bf13182d56b5b37c79b6e1b34fb45fb480cfffabd63a
17120c6c6412304b1170c4b700487606bb0858c5fd40c00489

USERAREA FACTORY ANDROID SERVICES

点击打开文件

名称	文件	开始地址	长度	大小

选择XML脚本

烧录

Tool

烧录

主页

设置

UFS 2.X

UFS 3.X

EMMC

Grea: HS-G2A

BUF: 32MB

读取安卓信息

备份重要分区

断开芯片

MiPi Connected

SN: 1881

FW: 10303

重置半皮设备

0.0MB/S

0 %

Brand: SAMSUNG Model: KLUDG4UHDB-B2D1

Version: 3.0 Data: 2019-12

Boot: Boot A RPMB: 0

CLK: 19.2MHz OTP: Locked

Capacity: 119GB FW Version: 1200

super: 0x41c00000 - 0x20e01000 (0.4GB)

version: 0x26ae00000 - 0x28edff000 (576.00MB)

preload: 0x28ee00000 - 0x2e65ff000 (1.37GB)

userdata: 0x2e6600000 - 0x772a7ff000 (465.06GB)

BackupGPT_3: 0x1dc97fb000 - 0xc97ff000 (20.00KB)

OEMINFO Partial Secure Write Protect:

Region0: start offset 0x2000000, length 0x800000(8.0MB)

Region1: start offset 0x5000000, length 0x800000(8.0MB)

OEMINFO

Cust Version1: BRA-AL00-CUST 104.0.0.115(C00)

Preload Version1: BRA-AL00-PRELOAD 104.0.0.11(C00R4)

Base Version1: BRA-LGRP1-CHN 104.0.0.116(SP8)

Country/Region:

303036303034323330316164616c6c2c636e03000292c896a671daed256288ba9b6e6df404de4b3926efc2cfdb3f0ac1d2514a4486865f527f4f3c299942a1f13c6460da325cad09a4e114a865d65011c38f5af6c075d718fce6d8de7826efb9a895cc4a1fbd9bc257735e67505cbf0356cc9d23406ea1da3fd95c055bdefe4be9d4244e999c32cfc6b64a1ee78882fae52b410e222c5e01bdfb5f2eadf58e1c761df0099c5f4562802a89d359b9a7289fdac2ca66bd2f682fbc19846bf6a7474067e3366887de6a902ad1e8693808d0cfaaf147a64692c458b0cf279a7cf8e90d28d85a24bb6774b897acf0bd56bb6bb1447fd6f1ca7e0c56feb18b3b10246d127ca65af27d365b7471930f833c09c1a47954726865e892b4aed18ab95362010ef3e6f547f4768c3fda650f016cfff8ee1330bd35615f4ef129799d6af87c3e5d459d20007eab22d1758176f57aee23c1204c38c3572a11b2504f360fd7cdf89fc90cec8260c4bed0fddb83b0daa5b6ab3c6907ae8d17797aa8e64e712cb1e085dab0f5e7d0becaaec0333e501756cf9d89b6c316f4463cfecd828d97d31e372612ea79e7d1e7be3f5fb3bea6b77aa024375c1d2ccb17d95c1f3af13c53f1592609847a7bba30571e3211d3cae97a5dccc3d541c3b8fd12231cb22a09c49bf13182d56b5b37c79b6e1b34fb45fb480cffabd63a17430c6c6412c20b4b1170c47004876c6bb09595cfd0c800480

USERAREA

FACTORY

ANDROID

SERVICES

Read Descriptor

Write Descriptor

Read Attribute

Write Attribute

Read Flag

Write Flag

重置UFS

Format UFS

RPMB

Select Key

Program Key

Get Counter

SAM Kingston SK WDC Micron

写DES配置

写时钟

格式化UFS

读取DES配置表

读取时钟

重置UFS

MiPi Tester

主页

设置

UFS 2.X

UFS 3.X

EMMC

Grea: HS-G2A

BUF: 32MB

读取安卓信息

备份重要分区

断开芯片

MiPi Connected

SN: 1881

FW: 10303

重置非皮设备

0.0MB/S

0 %

自定义设置LUN分区

Brand: SAMSUNG Model: KLUDG4UHDB-B2D1

Version: 3.0 Data: 2019-12

Boot: Boot A RPMB: 0

CLK: 19.2MHz OTP: Locked

Capacity: 119GB FW Version: 1200

Model Number: BRA-AL00

Number 0x5EF:

Cust Version2: BRA-AL00-CUST 104.0.0.115(C00)

Preload Version2: BRA-AL00-PRELOAD 104.0.0.11(C00R4)

Base Version2: BRA-LGRP1-CHN 104.0.0.116(SP8)

备份重要分区

读出 LUN_2_Part0_PrimaryGPT_2.bin Done

读出 LUN_2_Part2_persist.bin Done

读出 LUN_2_Part4_BackupGPT_2.bin Done

读出 LUN_3_Part0_PrimaryGPT_3.bin Done

读出 LUN_3_Part3_modem_secure.bin Done

读出 LUN_3_Part4_nvme.bin Done

读出 LUN_3_Part6_certification.bin Done

读出 LUN_3_Part7_oeminfo.bin Done

读出 LUN_3_Part9_modemnvmm_factory.bin Done

读出 LUN_3_Part10_modemnvmm_backup.bin Done

读出 LUN_3_Part11_modemnvmm_img.bin Done

读出 LUN_3_Part65_modem_fw.bin Done

读出 LUN_3_Part66_modem_vendor.bin Done

读出 LUN_3_Part67_modem_patch_nv.bin Done

读出 LUN_3_Part68_modem_driver.bin Done

读出 LUN_3_Part69_modemnvmm_update.bin Done

读出 LUN_3_Part70_modemnvmm_cust.bin Done

读出 LUN_3_Part88_BackupGPT_3.bin Done

读出 Attribute Done

读出 Descriptor Done

备份: C:/Users/Administrator/Desktop/MiPiTester免改CLK版本/
MiPiTester_V2.22/Backups/SAMSUNG_KLUDG4UHDB-
B2D1_2024-04-10-16-44-58

USERAREA FACTORY ANDROID SERVICES

Descriptor Access 00h: Access Disabled

Initial Power Mode 01h: Active Mode

High Priority LUN 7Fh

Secure Remove Type 00h: Erase of The Physical Memory

Name	大小	Boot
LUN0	4.00MB	Boot A
LUN1	4.00MB	Boot B
LUN2	8.00MB	
LUN3	119.15GB	
LUN4		
LUN5		
LUN6		
LUN7		

Device Capacity 100%

0B Available, Total 119GB

LUN Information

LUN Number 0

LU Enable 01h: Logical Unit enabled

Boot LUN ID 01h: Boot LU A

大小 4MB

Write Protection 00h: Not Write Protected

Memory Type 03h: Enhanced Memory Type 1

Data Reliability 01h: Is Protected

Block Size 0ch

Provisioning Type 02h: Enabled and TPRZ = 0

Reset 读出 写入 Load Save

MiPi Tester

主页

设置

UFS 2.X

UFS 3.X

EMMC

Grea: HS-G2A

BUF: 32MB

读取安卓信息

备份重要分区

断开芯片

MiPi Connected

SN: 1881

FW: 10303

重置非皮设备

0.0MB/S

0 %

Brand: SAMSUNG Model: KLUDG4UHDB-B2D1

Version: 3.0 Data: 2019-12

Boot: Boot A RPMB: 0

CLK: 19.2MHz OTP: Locked

Capacity: 119GB FW Version: 1200

Model Number: BRA-AL00

Number 0x5EF:

Cust Version2: BRA-AL00-CUST 104.0.0.115(C00)

Preload Version2: BRA-AL00-PRELOAD 104.0.0.11(C00R4)

Base Version2: BRA-LGRP1-CHN 104.0.0.116(SP8)

备份重要分区

读出 LUN_2_Part0_PrimaryGPT_2.bin Done

读出 LUN_2_Part2_persist.bin Done

读出 LUN_2_Part4_BackupGPT_2.bin Done

读出 LUN_3_Part0_PrimaryGPT_3.bin Done

读出 LUN_3_Part3_modem_secure.bin Done

读出 LUN_3_Part4_nvme.bin Done

读出 LUN_3_Part6_certification.bin Done

读出 LUN_3_Part7_oeminfo.bin Done

读出 LUN_3_Part9_modemnvmm_factory.bin Done

读出 LUN_3_Part10_modemnvmm_backup.bin Done

读出 LUN_3_Part11_modemnvmm_img.bin Done

读出 LUN_3_Part65_modem_fw.bin Done

读出 LUN_3_Part66_modem_vendor.bin Done

读出 LUN_3_Part67_modem_patch_nv.bin Done

读出 LUN_3_Part68_modem_driver.bin Done

读出 LUN_3_Part69_modemnvmm_update.bin Done

读出 LUN_3_Part70_modemnvmm_cust.bin Done

读出 LUN_3_Part88_BackupGPT_3.bin Done

读出 Attribute Done

读出 Descriptor Done

备份: C:/Users/Administrator/Desktop/MiPiTester免改CLK版本/
MiPiTester_V2.22/Backups/SAMSUNG_KLUDG4UHDB-
B2D1_2024-04-10-16-44-58

USERAREA FACTORY ANDROID SERVICES

bBootLunEn 01h: Enabled boot from Boot LU A

bCurrentPowerMode 11h: Active mode

bActiveICCLevel 00h: Lowest Active ICC level

bOutOfOrderDataEn 00h: Out-of-order data transfer is disabled

bBackgroundOpStatus 00h: Not required

bPurgeStatus 00h: Idle (purge operation disabled)

bMaxDataInSize 0x 8

bMaxDataOutSize 0x 8

dDynCapNeeded 0x 0

bRefClkFreq 0h: 19.2MHz

bConfigDescrLock 1h: Configuration Descriptor locked

bMaxNumOfRTT 0x 1

时钟设置

Reset 读出 写入 Load Save

MIPi Tester

主页

设置

UFS 2.X

UFS 3.X

EMMC

Grea: HS-G2A

BUF: 32MB

读取安卓信息

备份重要分区

断开芯片

MIPi Connected

SN: 1881

FW: 10303

重置半皮设备

0.0MB/S

0 %

Brand: SAMSUNG Model: KLUDG4UHD8-B2D1

Version: 3.0 Data: 2019-12

Boot: Boot A RPMB: 0

CLK: 19.2MHz OTP: Locked

Capacity: 119GB FW Version: 1200

Number 0x5EF:

Cust Version2: BRA-AL00-CUST 104.0.0.115(C00)

Preload Version2: BRA-AL00-PRELOAD 104.0.0.11(C00R4)

Base Version2: BRA-LGRP1-CHN 104.0.0.116(SP8)

备份重要分区

读出 LUN_2_Part0_PrimaryGPT_2.bin... Done

读出 LUN_2_Part2_persist.bin... Done

读出 LUN_2_Part4_BackupGPT_2.bin... Done

读出 LUN_3_Part0_PrimaryGPT_3.bin... Done

读出 LUN_3_Part3_modem_secure.bin... Done

读出 LUN_3_Part4_nvme.bin... Done

读出 LUN_3_Part6_certification.bin... Done

读出 LUN_3_Part7_ceinfo.bin... Done

读出 LUN_3_Part9_modemnvmm_factory.bin... Done

读出 LUN_3_Part10_modemnvmm_backup.bin... Done

读出 LUN_3_Part11_modemnvmm_img.bin... Done

读出 LUN_3_Part65_modem_fw.bin... Done

读出 LUN_3_Part66_modem_vendor_nv.bin... Done

读出 LUN_3_Part67_modem_patch_nv.bin... Done

读出 LUN_3_Part68_modem_driver.bin... Done

读出 LUN_3_Part69_modemnvmm_update.bin... Done

读出 LUN_3_Part70_modemnvmm_cust.bin... Done

读出 LUN_3_Part88_BackupGPT_3.bin... Done

读出 Attribute... Done

读出 Descriptor... Done

备份: C:/Users/Administrator/Desktop/MIPiTester/免改CLK 版本 MIPiTester_V2.22/Backups/SAMSUNG_KLUDG4UHD8-B2D1_2024-04-10-16-44-58

Read Descriptor Success

USERAREA FACTORY ANDROID SERVICES

fDeviceInit 0b: Device initialization completed or not started

fPermanentWPEn 00h: Permanent write protection disabled

fPowerOnWPEn 0b: Power on write protection disabled

fBackgroundOpsEn 1b: Device is permitted to run background operat

fDeviceLifeSpanModeEn 0b: Device Life Span Mode is disabled

fPurgeEnable 0b: Purge operation is disabled

fPhyResourceRemoval 0b: The device shall reset this flag to zero after cc

fBusyRTC 0b: Device is not executing internal operation rel

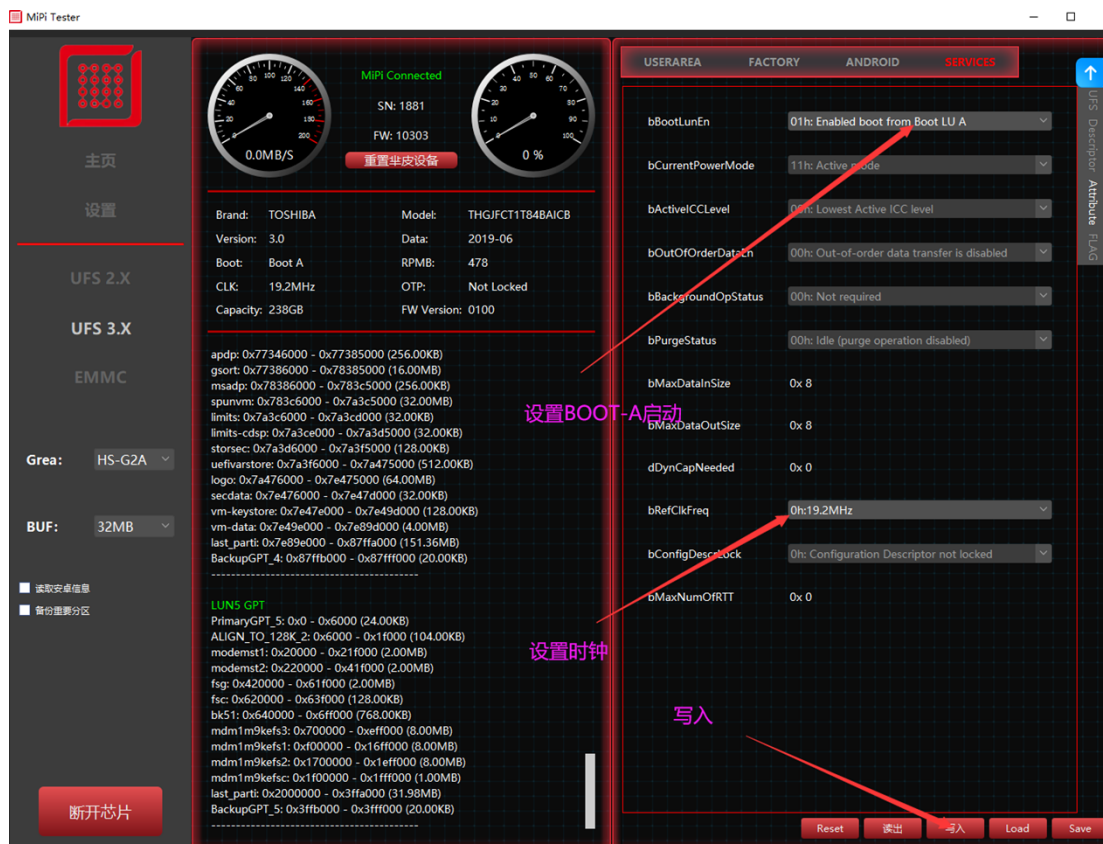
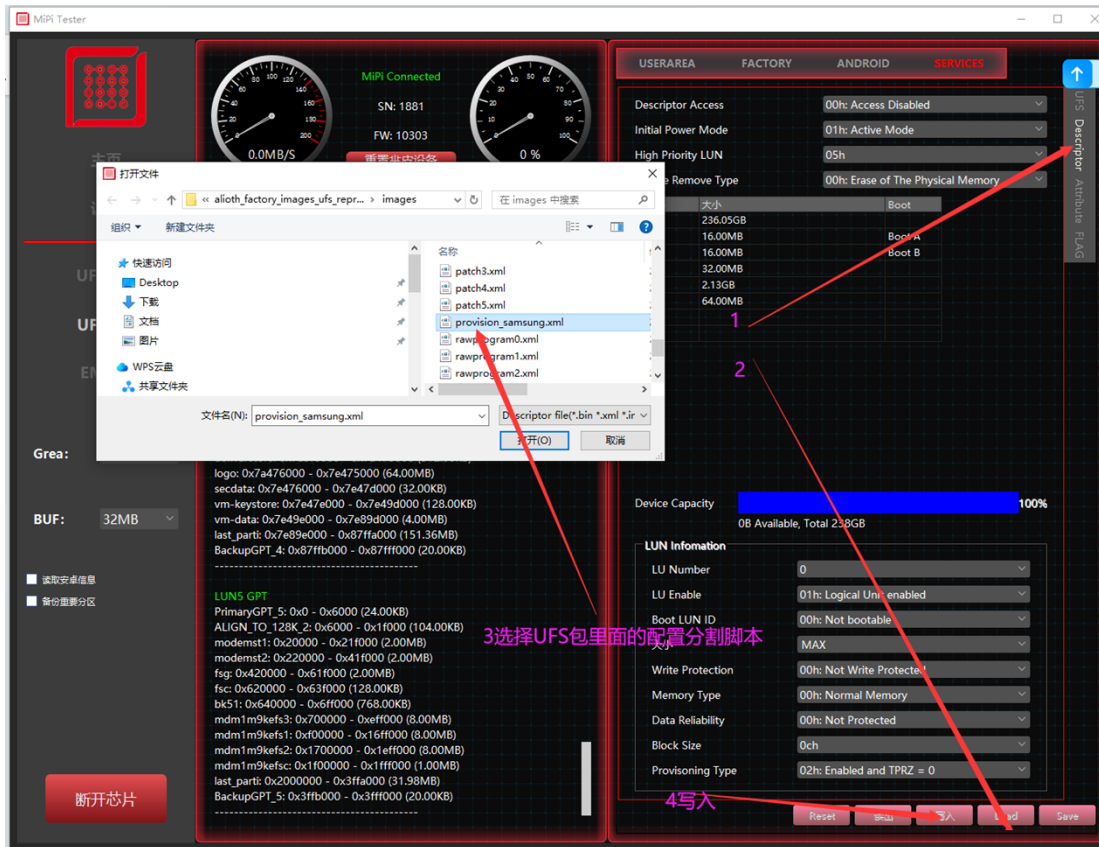
fPermanentDisFwUpdate 0b: The UFS device firmware may be modified

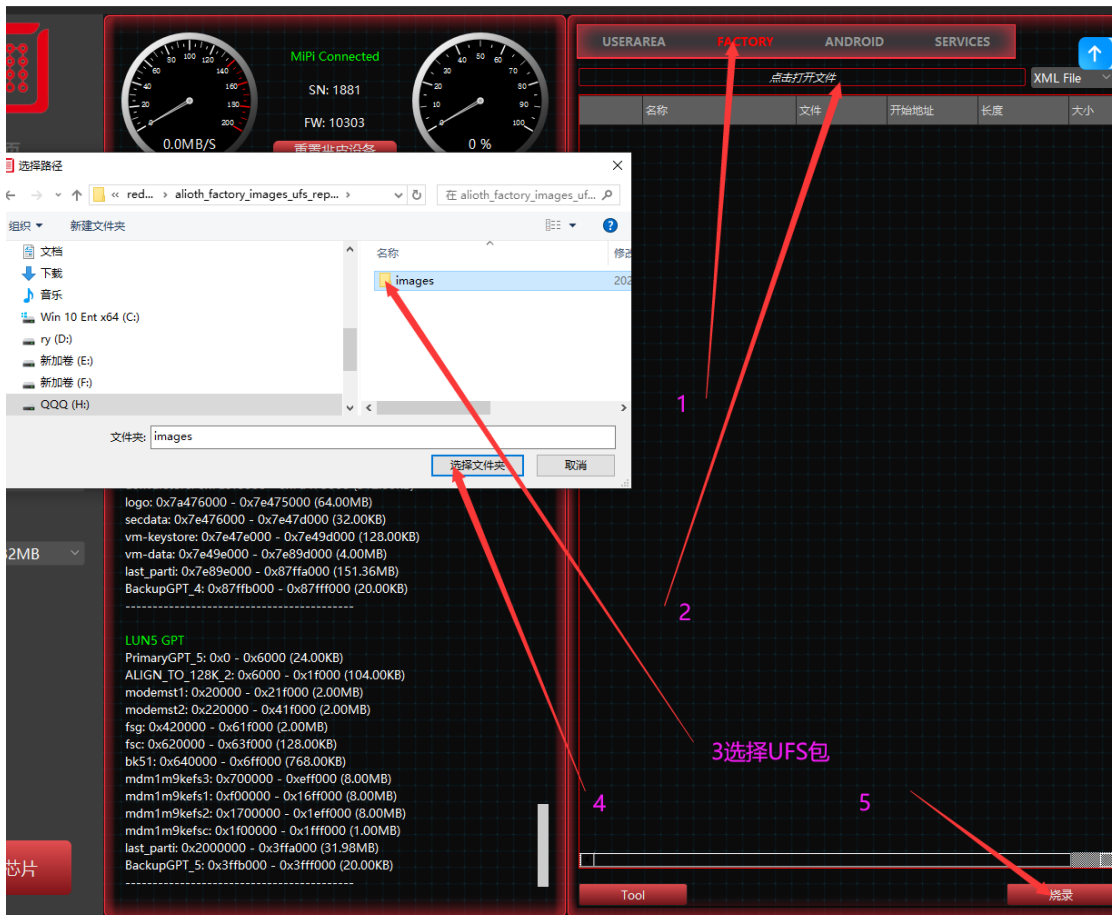
UFS Descriptor Attribute FLAG

读取

读取UFS重要参数

高通扩容

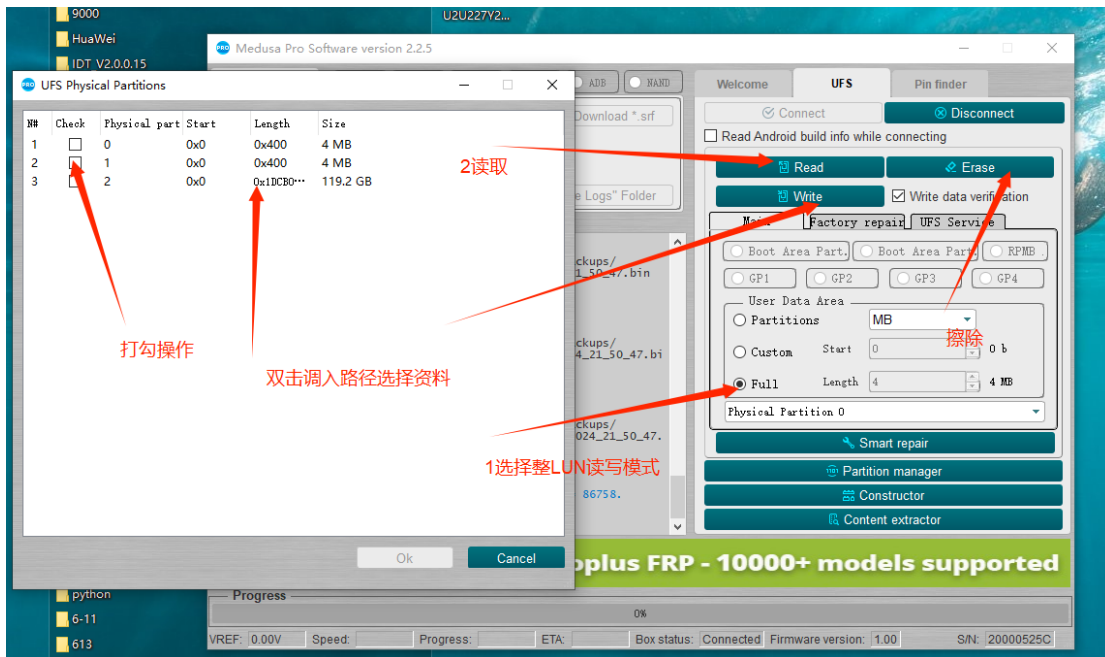
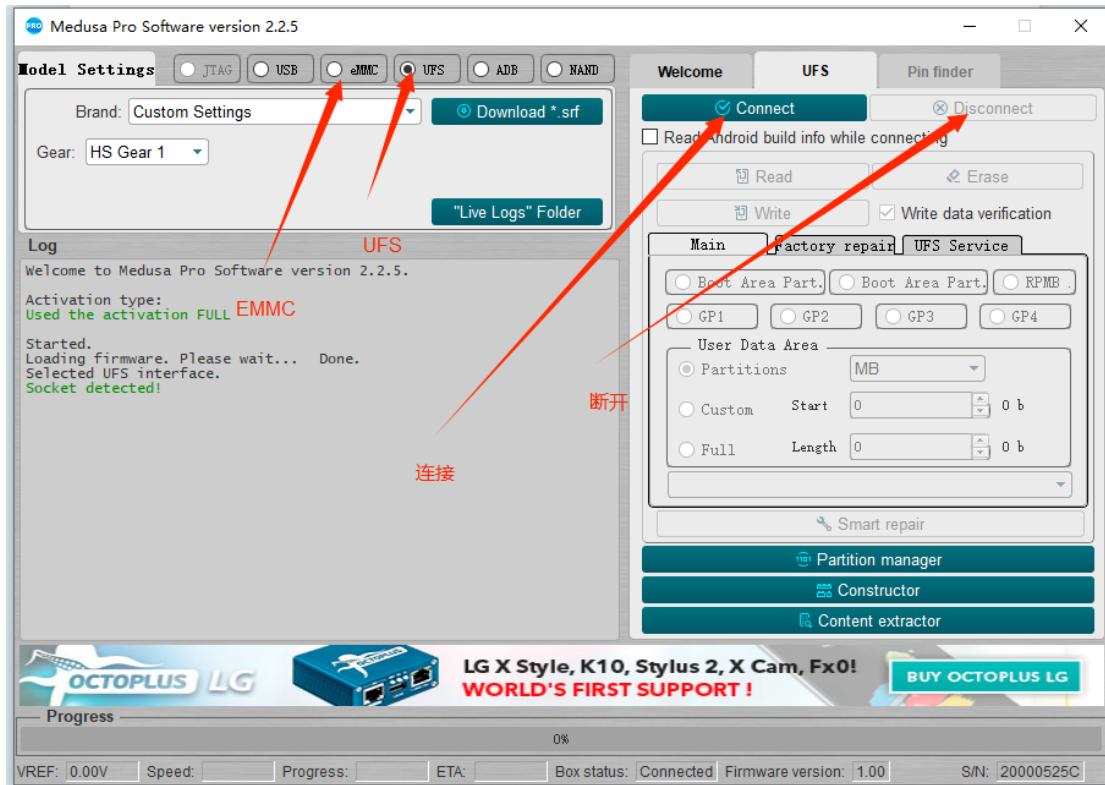






刷机写回原机 LUN5

美杜莎基本操作（其它功能自行研究）



Medusa Pro Software version 2.2.5

Model Settings: JTAG, USB, eMMC, UFS, ADB, NAND

Brand: Custom Settings | Download *.srf

Gear: HS Gear 1 | "Live Logs" Folder

Log:


```

P80: vbmata_preas_a (000ED000, 00000100) 1024 KB
Backing up nvme partition...
Opening C:/Program Files (x86)/Medusa Pro Software/Backups/SKhyinix_HN8T05BZGKX015_nvme_0xb080_0x500_25_06_2024_21_50_47.bin file...
Reading. Please wait... Done.
Elapsed time 00:00:00
SW: 2.2.5; FW: 1.00.
Backing up nvdta partition...
Opening C:/Program Files (x86)/Medusa Pro Software/Backups/SKhyinix_HN8T05BZGKX015_nvdta_0xea80_0x2000_25_06_2024_21_50_47.bin file...
Reading. Please wait... Done.
Elapsed time 00:00:00
SW: 2.2.5; FW: 1.00.
Backing up oeminfo partition...
Opening C:/Program Files (x86)/Medusa Pro Software/Backups/SKhyinix_HN8T05BZGKX015_oeminfo_0x14000_0x6000_25_06_2024_21_50_47.bin file...
Reading. Please wait... Done.
Elapsed time 00:00:01
SW: 2.2.5; FW: 1.00.
RPMB: Counter of the successful data write requests = 86753.
Please select file.
    
```

UFS Settings:

- Connect / Disconnect
- Read / Erase
- Write / Write data verification
- Main / Factory repair / UFS Service
- Boot Area Part., Boot Area Part., RPMB
- GP1, GP2, GP3, GP4
- User Data Area:
 - Partitions: Hex values
 - Custom: Start 0, Length 400000000, 16 GB
 - Full
- Physical Partition 2
- Smart repair
- Partition manager
- Constructor
- Content extractor

Progress: 0%

VREF: 0.00V | Speed: | Progress: | ETA: | Box status: Connected | Firmware version: 1.00 | S/N: 20000525C

NETWORK / IMEI REPAIR SUPPORTED MANY EXYNOS DEVICES OCTOPUS SAMSUNG BUY NOW

Partitions

#	Check	Partition	Physical Part	Start	Length	Size
1	<input type="checkbox"/>	GPT	2	0	8000	32 KB
2	<input type="checkbox"/>	boot...	2	8000	1A00000	26 MB
3	<input type="checkbox"/>	frp	2	1A08000	100000	1024 KB
4	<input type="checkbox"/>	reserve...	2	1B08000	4F8000	4.969 MB
5	<input type="checkbox"/>	protect1	2	2000000	800000	8 MB
6	<input type="checkbox"/>	protect2	2	2800000	800000	8 MB
7	<input type="checkbox"/>	seccfg	2	3000000	800000	8 MB
8	<input type="checkbox"/>	persist	2	3800000	2000000	32 MB
9	<input type="checkbox"/>	pininfo	2	5800000	100000	1024 KB
10	<input type="checkbox"/>	misc	2	5900000	200000	2048 KB
11	<input type="checkbox"/>	log	2	5B00000	5000000	80 MB
12	<input type="checkbox"/>	bootfa...	2	AB00000	500000	5 MB
13	<input type="checkbox"/>	efuse	2	B000000	80000	512 KB
14	<input type="checkbox"/>	nvme	2	B080000	500000	5 MB
15	<input type="checkbox"/>	nvram	2	B580000	1500000	21 MB
16	<input type="checkbox"/>	nvcfg	2	CA80000	2000000	32 MB
17	<input type="checkbox"/>	nvdta	2	EA80000	2000000	32 MB
18	<input type="checkbox"/>	bootl...	2	10A80000	2000000	32 MB
19	<input type="checkbox"/>	reserve...	2	12A80000	1580000	21.5 MB

Read each partition into separate binary (*.bin) file

Ok | Cancel

UFS Settings:

- Partitions: KB
- Custom: Start 0, Length 32, 32 KB
- Full

Progress: 0%

VREF: 0.00V | Speed: | Progress: | ETA: | Box status: Connected | Firmware version: 1.00 | S/N: 20000525C

NETWORK / IMEI REPAIR SUPPORTED MANY EXYNOS DEVICES OCTOPUS SAMSUNG BUY NOW

选择分区点击OK会保存为MTP格式的文件

MTP格式读取

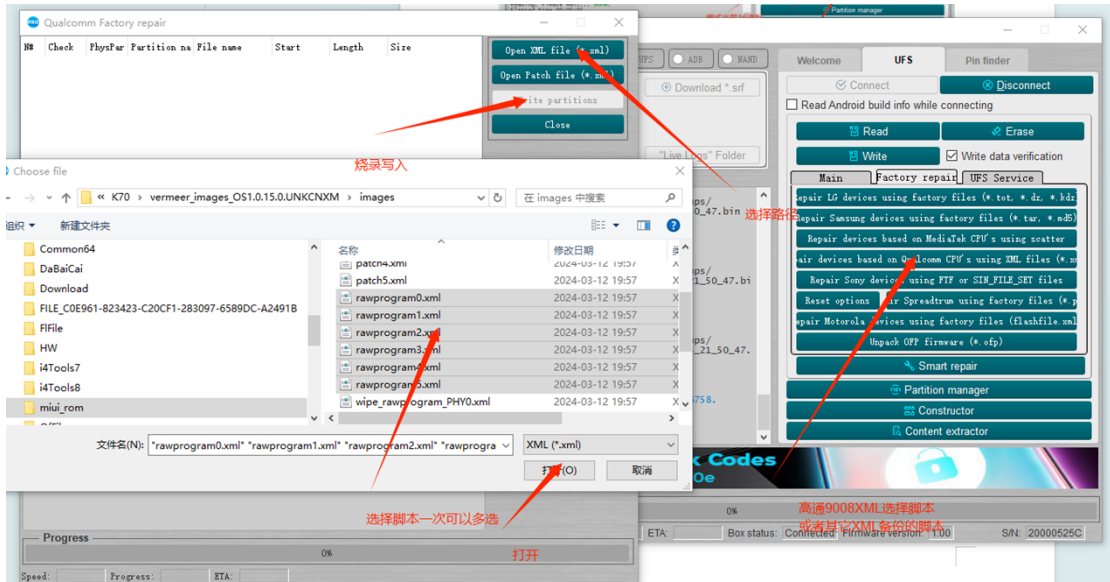
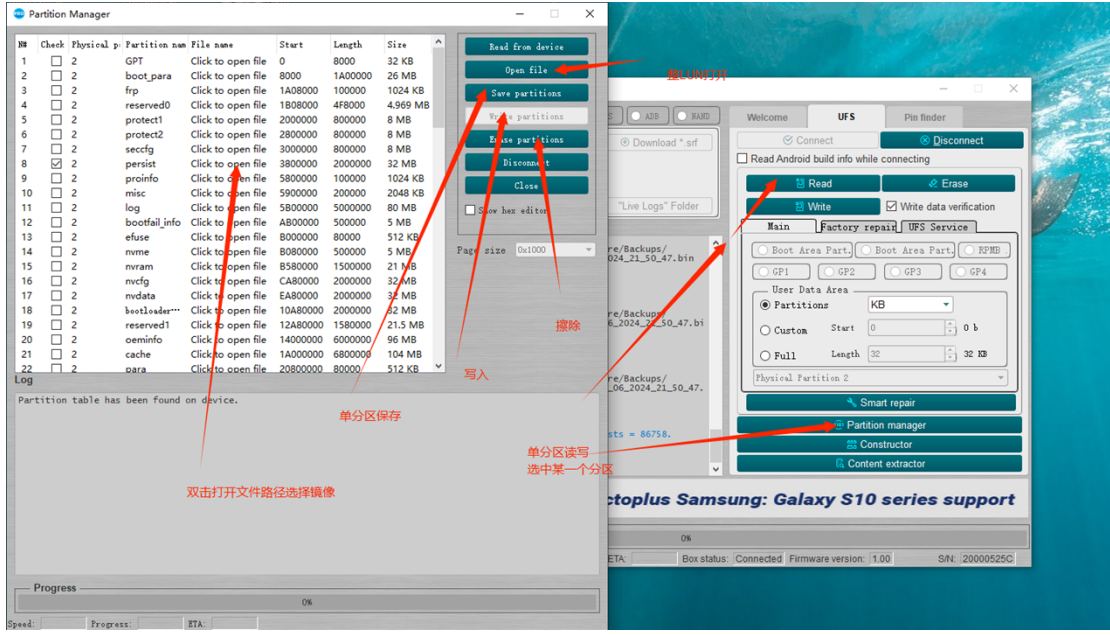
LUN2的长度

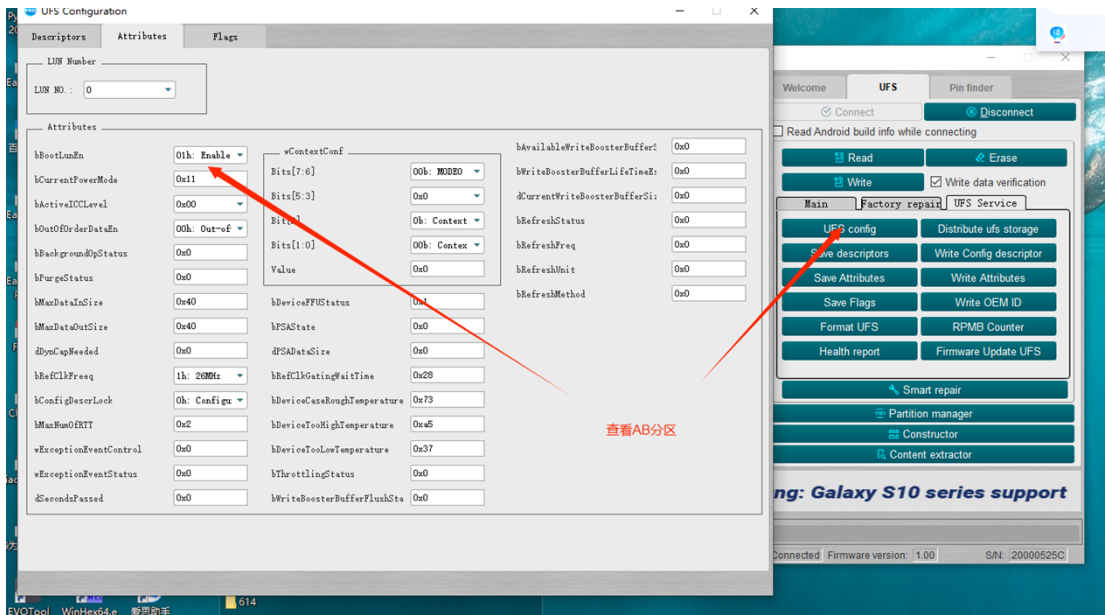
模式当前16进制

选择模式如LUN2

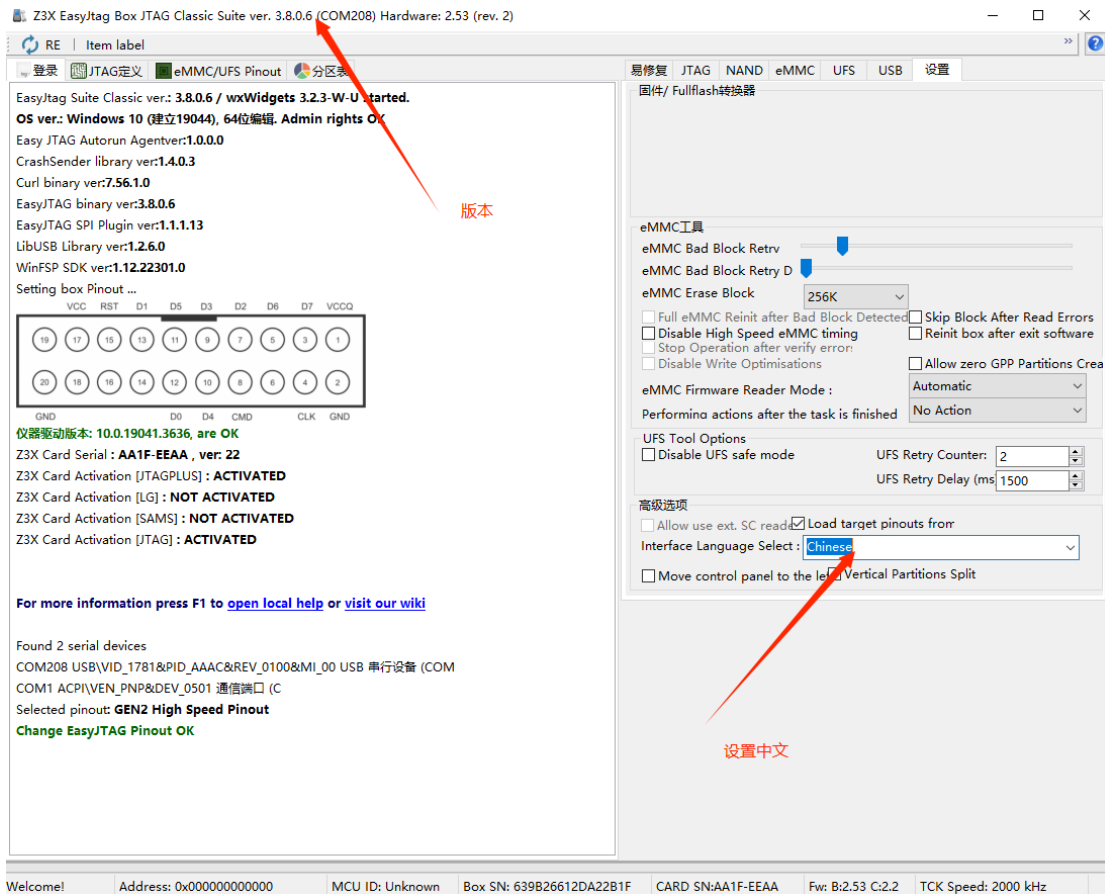
读16进制

读取



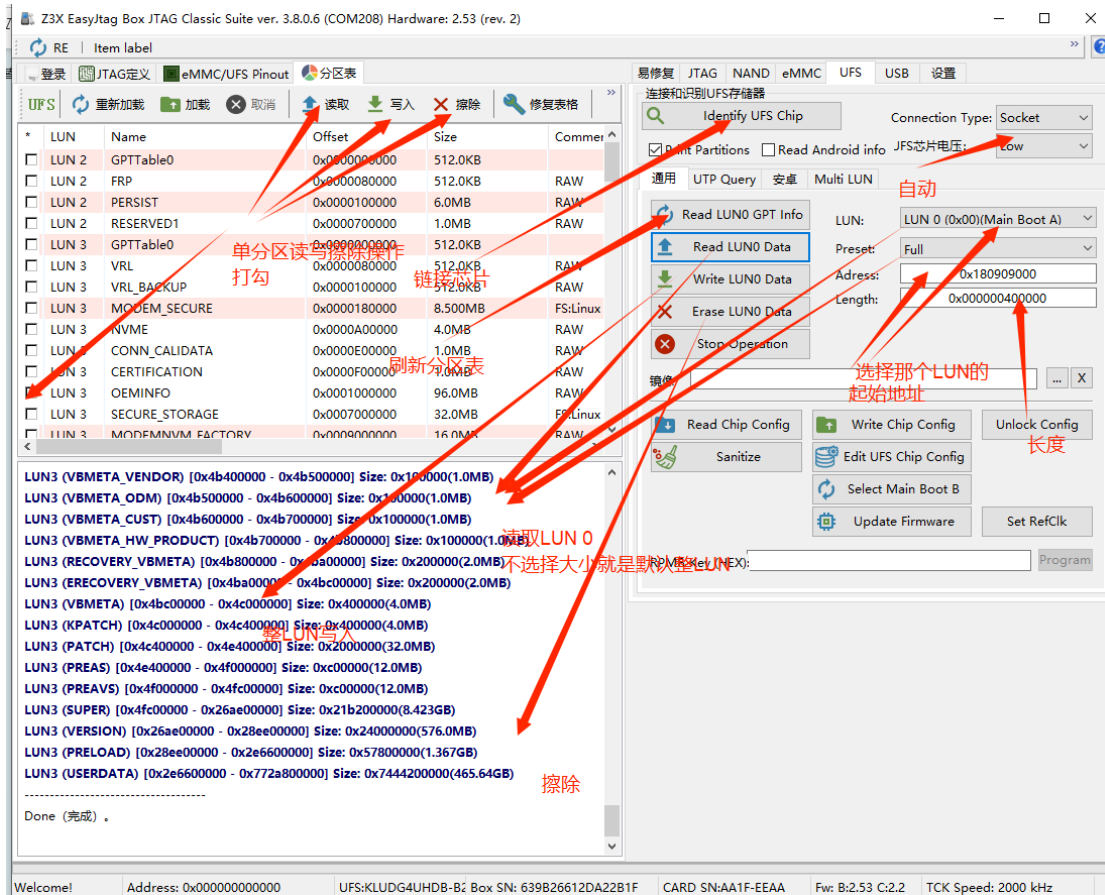


EASY-基本操作



版本

设置中文



RE | Item label

UFS 重新加载 加载 取消 读取 写入 删除 修复表格

LUN	Name	Offset	Size	Commer
LUN 2	GPTTable0	0x0000000000	512.0KB	
LUN 2	FRP	0x0000080000	512.0KB	RAW
LUN 2	PERSIST	0x0000100000	6.0MB	RAW
LUN 2	RESERVED1	0x0000700000	1.0MB	RAW
LUN 3	GPTTable0	0x0000000000	512.0KB	
LUN 3	VRL	0x0000080000	512.0KB	RAW
LUN 3	VRL_BACKUP	0x0000100000	512.0KB	RAW
LUN 3	MODEM_SECURE	0x0000180000	8.500MB	FS:Linux
LUN 3	NVME	0x0000A00000	4.0MB	RAW
LUN 3	CONN_CALIDATA	0x0000E00000	1.0MB	RAW
LUN 3	CERTIFICATION	0x0000F00000	1.0MB	RAW
LUN 3	OEMINFO	0x0001000000	9.500MB	RAW
LUN 3	SECURE_STORAGE	0x0007000000	32.0MB	FS:Linux
LUN 3	MODEMNVMM_FACTORY	0x0009000000	16.0MB	RAW

单分区打勾点写入会跳出选择文件

整LUN选择镜像路径

读取配置参数

写入配置参数

切换AB分区

座子
ISP模式选择

连接和识别UFS存储器

Identify UFS Chip

Connection Type: **Socket**

Print Partitions Read Android info JFS芯片电压: **Low**

通用 UTP Query 安卓 Multi LUN

Read LUN0 GPT Info LUN: **LUN 0 (0x0000 Main Boot A)**

Read LUN0 Data Preset: **Full**

Write LUN0 Data Address: **0x180909000**

Erase LUN0 Data Length: **0x000000400000**

Stop Operation

镜像

Read Chip Config Write Chip Config Unlock Config

Sanitize Exit UFS Chip Config Select Main Boot B Update Firmware Set RefClk

RPMB Key (HEX) Program

LUN3 (VBMETA_VENDOR) [0x4b400000 - 0x4b500000] Size: 0x100000(1.0MB)

LUN3 (VBMETA_ODM) [0x4b500000 - 0x4b600000] Size: 0x100000(1.0MB)

LUN3 (VBMETA_CUST) [0x4b600000 - 0x4b700000] Size: 0x100000(1.0MB)

LUN3 (VBMETA_HW_PRODUCT) [0x4b700000 - 0x4b800000] Size: 0x100000(1.0MB)

LUN3 (RECOVERY_VBMETA) [0x4b800000 - 0x4ba00000] Size: 0x200000(2.0MB)

LUN3 (ERECOVERY_VBMETA) [0x4ba00000 - 0x4bc00000] Size: 0x200000(2.0MB)

LUN3 (VBMETA) [0x4bc00000 - 0x4c000000] Size: 0x400000(4.0MB)

LUN3 (KPATCH) [0x4c000000 - 0x4c400000] Size: 0x400000(4.0MB)

LUN3 (PATCH) [0x4c400000 - 0x4e400000] Size: 0x200000(32.0MB)

LUN3 (PREAS) [0x4e400000 - 0x4f000000] Size: 0xc00000(12.0MB)

LUN3 (PREAVS) [0x4f000000 - 0x4fc00000] Size: 0xc00000(12.0MB)

LUN3 (SUPER) [0x4fc00000 - 0x26ae00000] Size: 0x21b200000(8.423GB)

LUN3 (VERSION) [0x26ae00000 - 0x28ee00000] Size: 0x24000000(576.0MB)

LUN3 (PRELOAD) [0x28ee00000 - 0x2e6600000] Size: 0x57800000(1.367GB)

LUN3 (USERDATA) [0x2e6600000 - 0x772a800000] Size: 0x7444200000(465.64GB)

Done (完成)

Welcome! Address: 0x000000000000 UFS:KLUDG4UHDB-B; Box SN: 639B26612DA22B1F CARD SN:AA1F-EEAA Fw: B:2.53 C:2.2 TCK Speed: 2000 kHz